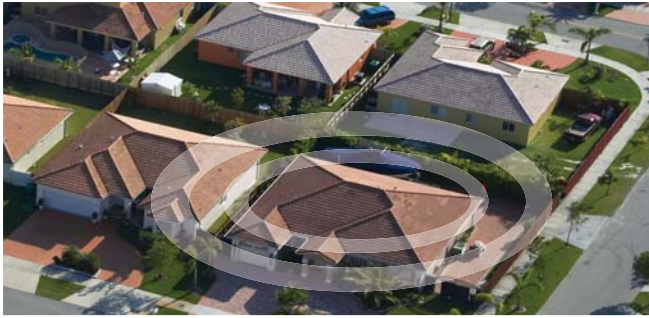




Synchronize GIS & CAMA
Data in Real-Time

ParcelSync™



“Using ParcelSync, we’ve experienced a 50% increase in productivity, eliminated our backlog and expanded taxpayer services while maintaining our 1970’s staffing level.”

Cindy Braddock
GIS Deputy Assessor
Boulder County, CO

Overview

ParcelSync enables the Assessor’s office to dramatically increase revenues, productivity and responsiveness by effectively integrating parcel and CAMA data management.

Designed to address the unique demands of high growth jurisdictions, ParcelSync will help you:

- ✘ Improve analysis and accelerate decisions using fully synchronized GIS and CAMA data
- ✘ Eliminate costly errors caused by manual, dual data entry on different schedules
- ✘ Speed GIS and CAMA data management while improving data quality
- ✘ Ensure consistent processing of land-edit transactions across multiple mappers
- ✘ Reduce parcel maintenance backlog by working in multiple time periods
- ✘ Quickly respond to parcel-related data requests from other stakeholders

Fully Integrated Parcel Maintenance

In fast growing jurisdictions, it is difficult for GIS and appraisal staff to keep pace simply due to the disparate methods by which parcel and CAMA data is maintained. The impact on the Assessor’s office is significant:

- ✘ Lost or jeopardized revenues due to incorrect or sub-optimal property valuation, delayed collections, etc.
- ✘ Insufficient resources – especially during mandatory CAMA “no update” periods which cause backlogs
- ✘ High cost of appeals – not only in lost revenue, but the time spent by appraisal staff gathering supporting data
- ✘ Poor data sharing as valuable staff waste time double-checking requests because the data can’t be trusted
- ✘ Constituent frustration and mistrust despite promises by elected officials to be more responsive and accountable

Only ParcelSync allows GIS and CAMA data to be entered once – from a single interface – to speed the processing of land-edit transactions while ensuring data quality.

CAPABILITY	WHAT IT DOES	WHAT IT MEANS TO YOU
Common User Interface	Single interface provides access to all functions; view and edit CAMA attributes natively; co-exists with 3rd-party or custom mapping and geometry creation tools	Provides mappers with quick and intuitive access to GIS and CAMA data using ESRI desktop tools (ArcMap extension)
Concurrent Parcel and CAMA Editing	Automatically creates and synchronizes CAMA records when transactions are posted; allows attribute values to be inherited from existing parcels to avoid retyping	Efficient, tightly-integrated approach accelerates the processing of land-edit transactions while eliminating costly errors caused by manual data entry
Parcel Versioning	3-tier data storage model: Factory (configured for mappers), Warehouse (current and historic trends) and Products (exports for other applications and departments)	Allows data entry to occur anytime – regardless of when a parcel becomes “official” – to boost productivity while eliminating backlog during “no update” periods
Transaction Management	Ensures GIS/CAMA data is accurately committed and integrity is maintained; allows transactions to be shared across team members; default, best practice workflows	Step-driven approach ensures consistent and compliant transactions while enabling mappers to collaborate on “in progress” editing tasks
Configuration and Extensibility	Existing CAMA integrations with Tyler Technologies, Patriot Properties and IIS; supports configuration of new transactions types; open API for custom integrations	Best-of-breed approach leverages and protects your investments in people, processes and existing systems

Assessment at the Speed of Change

Better decisions, faster answers, superior results. By reducing the time, costs and risks of manually entering data on different schedules, ParcelSync helps you reliably process land-edit transactions at the speed of change.

Increase Revenues

By dramatically improving the usefulness and consistency of parcel and CAMA system data, the Assessor's office will accurately assess property values, identify and value properties faster, accelerate collection rates and better defend itself against appeals.

Boost Productivity

By automating data entry and enabling mappers to perform land edit tasks – even when the CAMA system is in a “no update” mode – the Assessor's office will reduce costly backlogs, ensure task consistency and keep pace with a rapidly evolving land base without adding staff.

Improve Responsiveness

By streamlining parcel and CAMA data maintenance, the Assessor's office will become more agile and thus be in a stronger position to serve internal and external constituents while responding to evolving jurisdictional demands.

Your Success is Our Success

Hart combines innovative products with proven deployment expertise to ensure your project delivers as promised.

“Hart saw how our vision could achieve improved results for all our jurisdictions. It goes right down to the people – I think Hart has some of the most innovative people in this area of business in the nation. Their leadership and commitment to the customer has been a key part of it for me.”

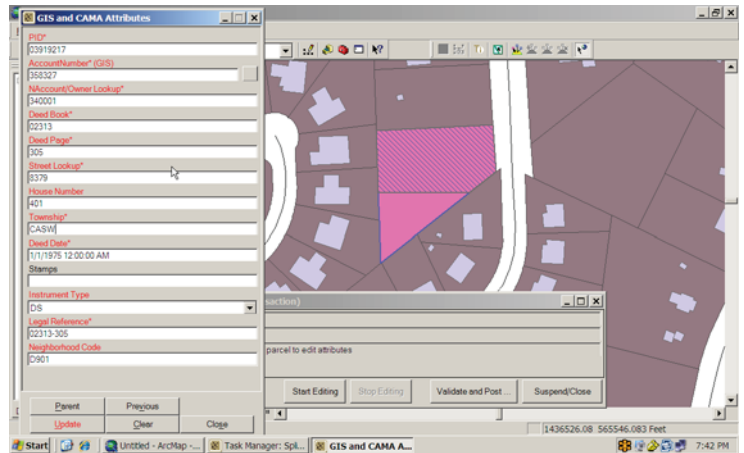
- Garrett Alexander, Tax Assessor, Mecklenburg County, NC

About Hart InterCivic

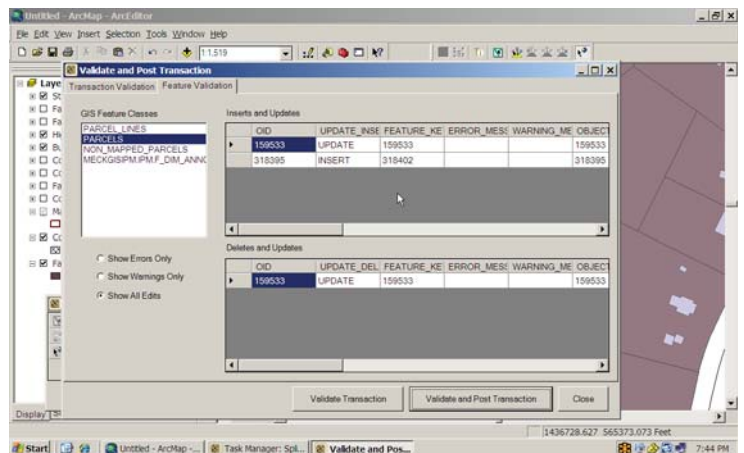
Hart helps local governments streamline operations, make better decisions and adapt to evolving needs by leveraging GIS to improve the management, accessibility and quality of location-based information across the enterprise.



800.223.HART



ParcelSync automatically populates and provides mappers native access to CAMA system attributes within ArcMap



Mappers use the ParcelSync step-driven transaction manager to ensure consistent processing of land-edit transactions.

Server Software Requirements

- ✦ ESRI ArcSDE 9.1 or 9.2
- ✦ Microsoft SQL Server 2000/2005 or Oracle 9

Client Software Requirements

- ✦ Microsoft Windows XP (SP2)
- ✦ Microsoft .NET Framework 2.0 and 3.5
- ✦ ArcGIS Desktop 9.2 (SP3)
 - » Requires ArcEditor or ArcInfo license level (ArcView license level not supported)
 - » ArcGIS .NET support option must be installed

Supported CAMA Systems

- ✦ Tyler Technologies (Eagle) AIMS/CAMA
- ✦ Tyler Technologies (CLT) iasWorld
- ✦ Patriot Properties AssessPro
- ✦ Intelligent Information Systems LR/CAMA